



Tropical Area



Tropical Area is a consultancy company specialised in resorts development including preliminary and feasibility studies, architecture , interior design and project management Registered in Malaysia in 1999 by Philippe Villeroux, architecte DPLG, Tropical Area has always been about resorts.

Philippe Villeroux graduated in 1989 from Bordeaux School of Architecture and immediately started as one of the two partners in Eric Raffy & Associates.

The young company did groundbreaking design works, as Michel Bras restaurant & Hotel , Paco Rabanne main showroom , discovered Asia through Club Med Resorts and moved to Japan in the early nineties.

Since its incorporation, Tropical Area has been involved in numerous hotels and resorts, as architects and or master planners, designers project managers .

We mainly work on hospitality projects, we made a specialty of developments in remote locations, with strong emphasis on the respect of the environment, the most important single component of any resort. Each of our works remains the journal of the discovery of a new place, a new experience.

We have strong beliefs in term of design, with the key words of nature, roots and mood but we always remain open to other influences, cultures and inspirations. We believe in teamwork, in the complementarity that we find in the knowledge, creativity and competence of other consultants.

This is the core of our work, a shared creation that all, either clients ,consultants or contractors, can recognise as their own.



Hospitality Conception, Architecture Design
Interior Design, Project Management



ARCHITECTURE & MASTER PLANNING

Philippe Villeroux,

French, principal, architecte DPLG, is the direct contact for all project concepts . Philippe oversees the development of the architectural expression of all projects.

Queena Djajptawira,

Indonesian, partner, senior architect, manage Tropical Area Indonesia. Queena has been working with Tropical Area since 2001. Queena is an expert in timber buildings.

Lim Kee Chuan,

Malaysian, partner, master in architecture, is in charge of architecture in Malaysia. Kee, soon, will be acting as registered architect for Malaysia.

ARCHITECTURE



MALAYSIA

Sematan Resort - Kuching
Asia World Resorts- Mantanani Resort
Mengalum Resort - Sabah
Pearl Beach Resort - Pulau Bodgaya
Asia World Resorts - Blue World Resort Gaya
Asiane Kapalai Resort - Sipadan Island
Asia World Resort Lahad Datu
The Beach Club – Kota Kinabalu
Escapade Bagan Lalang
Sepang Gold Coast : The Sea Palm
The Mangrove Shade Resort

INDONESIA

Kinnara Resort by Ritz Carlton - Pulau
Lancang Seribu
Puncak Resort Jakarta
Plenitudes Villas Sanur
W Resort – Bali

MALDIVES

Fun Island redevelopment
Laamu Six Senses (Extension)
Soneva Secret
White Sands Resort and Spa

FRENCH POLYNESIA

St Regis – Bora Bora (Extension)

AUSTRALIA

Byron Bay Resort

SRI LANKA

Kalutara Kani Lanka Resort and Spa

VIETNAM

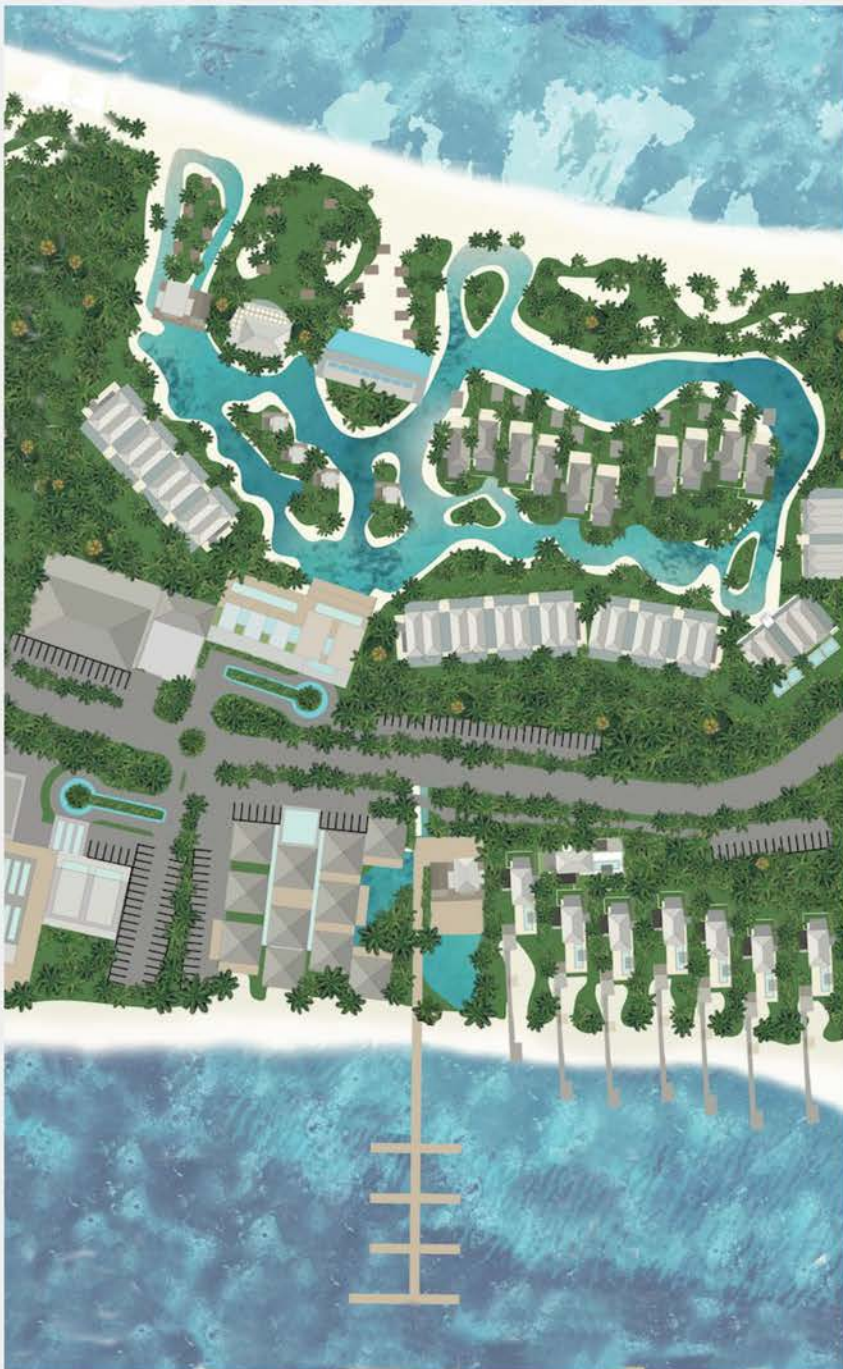
Club Med Cam Rah

CHINA

Water Margins Resort - Dong Ping



Hospitality Conception, Architecture Design
Interior Design, Project Management



MASTER PLANNING



MALAYSIA

- Sepang Gold Coast - Bagan Lalang
- Ritz Carlton Langkawi
- The Straits Resort & Spa- Port Dickson
- Mengalum Resort - Sabah
- The Beach Club – Kota Kinabalu
- Asia World Resort Lahad Datu
- Pearl Beach Resort - Pulau Bodgaya - Semporna
- Asia World Resorts - Mantanani Beach Resort - Pulau Mantanani

INDONESIA

- Pandavas Ritz Carlton Reserve- Seribu
- Labengki tourism development- Labengki- Sulawesi
- Club Med Lombok - Lombok
- Kinnara Resort by Ritz Carlton - Pulau Lancang- Seribu
- Ritz Carlton Reserve - Pandavas
- Tanjung Lesung - Java
- Belitung Watuduya Resort

MALDIVES

- Fun Island redevelopment
- Soneva Secret

VIETNAM

- Club Med Cam Rah

CHINA

- Water Margins Resort - Dong Ping

U.A.E

- Private Island Resort for HH Sheikh Ahmed B. Zayed Al Nahyan - Ras Ghurab

FRENCH ANTILLES

- Baie Nettle Resort- St Martin



INTERIOR DESIGN

Yew Mun Chan,
Malaysian, partner, interior designer, supervise all interior design concepts.
Yew Mun, previously with GDP, has 20 years of experience as senior designer.

Christie Chin,
Malaysian, interior designer, is in charge of interior finishes and fabrics through smart partnership. Christie, previously with Fella Design, has 20 years of experience in the field and has great knowledge in procurement.

Joan Ho,
Malaysian, partner, interior designer and leads the Interior design studio and supervise the documentation production. Joan has been with Tropical Area since the incorporation.

Lim Yeow Chet (Cmetric Designs),
Malaysian, interior designer and project manager, is in charge of special project through smart partnership. Chet has a deep knowledge of Malaysian business environment.

INTERIOR DESIGN IMPLEMENTATION SERVICES



MALAYSIA

Momo Chow Kit - Interior Design completion and implementation
Ormond Chow Kit Kuala Lumpur - Interior Design completion and implementation
Ritz Carlton Langkawi - Interior Design completion and implementation

INDONESIA

Club Med Bali Nusa Dua- All Public Areas Interior Design implementation

THAILAND

Club Med Phuket - All public areas Interior Design implementation

MALDIVES

Club Med Kani - Interior Design implementation



Hospitality Conception, Architecture Design
Interior Design, Project Management



*INTERIOR DESIGN
FULL SCOPE DESIGN SERVICES*



MALAYSIA

The Straits Resort & Spa - Port Dickson
Tune Kuching
Alila Dalit Bay - Sabah(in association with Niche)
Tune Danga Bay
Tune One Borneo
Tune KLIA2

Asia World Resorts- Beach Resort - Mantanani
Asia World Resorts- Blue World Gaya
Tanjung Sanctuary Langkawi
Club Med Cherating
The Golden Palm Tree - Avani
Tanjung Sanctuary Resort
Coronade Hotel - Kuala Lumpur

FRENCH POLYNESIA

Bora Bora Nui Resort & Spa - Hilton
Sheraton Tahiti
Sheraton Moorea Resort and Spa

MALDIVES

Club Med Faru

JAPAN

Club Med Sahoro
Club Med Kabira

INDONESIA

The Sapphire Resort - Bali
Toros Kampali Resort - Sulawesi
Ritz Carlton Reserve Pandavas
Club Med Bintan
Club Med Bali Nusa Dua - Spa and Suites

U.A.E

Private Island Resort for HH Sheikh A.B.
Zayed Al Nahyan

THAILAND

Club Med Phuket -Rooms

AUSTRALIA

Club Med Club Med Lindeman

SINGAPORE

Shangri-La Rasa Sentosa - Beach Restaurant

SRI LANKA

Villa Diva Sielen Galle

FRENCH ANTILLES

Baie Nettle Marriott - St Martin



HOSPITALITY CONSULTANCY & PROJECT MANAGEMENT

Yves Salharang,

French , partner, acting managing director is in charge of the projects coordination and hospitality operational concepts. Yves previous experience as Asia region Projects Director for Club Med is a great asset to our company.

Alain Laplace,

French, partner, senior project manager, is expert technical requirements. Alain has been Head of technical services in hotels for 10 years and Project Manager for 15 years .

Theera Sitsayanarain,

Thai, partner, senior structural engineer, is in charge of the architectural documentation and technical coordination.

Adrian Leong,

Malaysian, project manager for interior design.. Adrian was working on projects with NIKE SEA in planning, design and implementation for 7 years; then Maxis for, planning, design new concept stores, implementation and refurbishments of over 50 stores in 5 years.

MALDIVES

Club Med Kani - Construction (2000),
Club Med Kani - Redevelopment (2005)
Club Med Kani - Upgrading (2010 - 2016)
Club Med Kani - Redevelopment (2020)
The Oberoi @ Randheli (2008) - interrupted
Redevelopment (2005)
Soneva Fushi Resort & Spa extension (2002)
Soneva Gili Resort and Spa (2001)

THAILAND

Club Med Phuket - Upgrading (2014),
Redevelopment (2019-2023)

FRENCH POLYNESIA

St Regis – Bora Bora (2003-2005)

MALAYSIA

Momo's hotel- Malaysia (2019)
Tune Danga Bay (2019-ongoing)
Ormond Chow Kit (2018-2019)
Ritz Carlton Langkawi (2015-2016)
Club Med Cherating- Upgrading (2004)

IRELAND

The Ormond Dublin, Redevelopment
(2019-2022)
Ormond Dublin (2019)

JAPAN

Club Med Sahoro – Upgrading
(2018-2019)



Hospitality Conception, Architecture Design
Interior Design, Project Management



Tropical Area is a relatively small practice, by choice, with a personal approach to the work of Architects ,Designers and Project Managers . Our team rarely exceed 25 professionals, small by Asian standards and we fully specialise in Hospitality projects . We limit the quantity of projects we undertake to guaranty the full involvement of all our key persons in the projects we follow. The key persons in our company are partners, linked by friendship and common experience.

Philippe Villeroux settled in South East Asia in 1993, working initially in Singapore with the Interior Designer Kiel Ongg.

After 5 years designing hotels and resorts in Malaysia, Philippe Villeroux realised the interior design for the Club Med of Kabira , in the Japanese island of Ishigaki, then moved to French Polynesia ,at the request of Pierre Lacombe, of Tropical Architecture,, leading architectural practice in French Polynesia.

As Senior Architect, Philippe worked on several luxury resort projects and developed a knowledge of overwater resorts construction, in one of the most specialised practices in the world .

Philippe Villeroux came back in Malaysia in 2001 to follow the development of the new company in the Maldives and South East Asia.

Yves Salharang and Alain Laplace , previously holding senior positions in Club Med Asia joined the company a few years later, to reinforce the hospitality expertise and project management operations.

Queena Djajaprawira, architect and Theera Sitsayanarain , structural engineer went to set up PT Tropical Area in Jakarta , to complement the operations of Tropical Area Sdn Bhd in Kuala Lumpur .

Yew Mun Chan, joined the company in 2015 to lead the Interior Design team. Yew Mun as a senior associates in GDP contributed to major projects in Malaysia (Impiana Hotel concept, The Club Suajana, ...)



Hospitality Conception, Architecture Design
Interior Design, Project Management



Tropical Area Sdn Bhd
Malaysia
Established : 1999

Adrian Leong
Alain Laplace
Christie Ching (Smart Partnership)
Heather Yap
Joan Ho
Lim Kee Chuan
Lim Yeow Chet, Cmetric Designs (Smart Partnership)
Philippe Villeroux
Yap Soh Eng
Yew Mun Chan
Yves Salharang

PT Tropical Area
Indonesia
Established 2006

Adis Hijriah
Adrian Brodjonegoro
Blasius Andy
Dominique Laksamana
Dwika Muhamad Dien
Indah Febrianty
Michell Edbert Suryanto
Monika Sidarta Gunawan
Queena Djajaprawira
Rudy Suryadi
Rudy Yanto
Theera Sitsayanarain
Yusup Ginanjar



Hospitality Conception, Architecture Design
Interior Design, Project Management



RITZ CARLTON, Langkawi

Architecture
Interior Design
Project Management

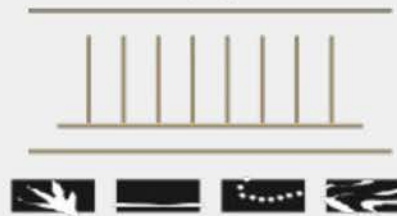


Hospitality Conception, Architecture Design
Interior Design, Project Management



RITZ CARLTON LANGKAWI
Tropical Area & Philippe Villeroux

Prix Versailles Asia Pacific for Hotel Exteriors
World Best New Resort Spa 2018
World Spa Award 2018



Exterior

South Asia
and the Pacific

Hotels

2018



Hospitality Conception, Architecture Design
Interior Design, Project Management

ORMOND CHOW KIT, Kuala Lumpur

Architecture Implementation
Interior Design Implementation
Project Management



TUNE KLIA 2 KANI, Malaysia

Interior Design



ONGOING PROJECTS

SAPPHIRE
BALI - INDONESIA



RITZ CARLTON PANDAVAS
SULAWESI - INDONESIA



CLUB MED PHUKET
THAILAND



MARRIOTT BAIE NETTLE ST. MARTIN



ONGOING PROJECTS

CLUB MED
ST. ANNE SEYCHELLES



TOROS KAMPALI
SULAWESI - INDONESIA

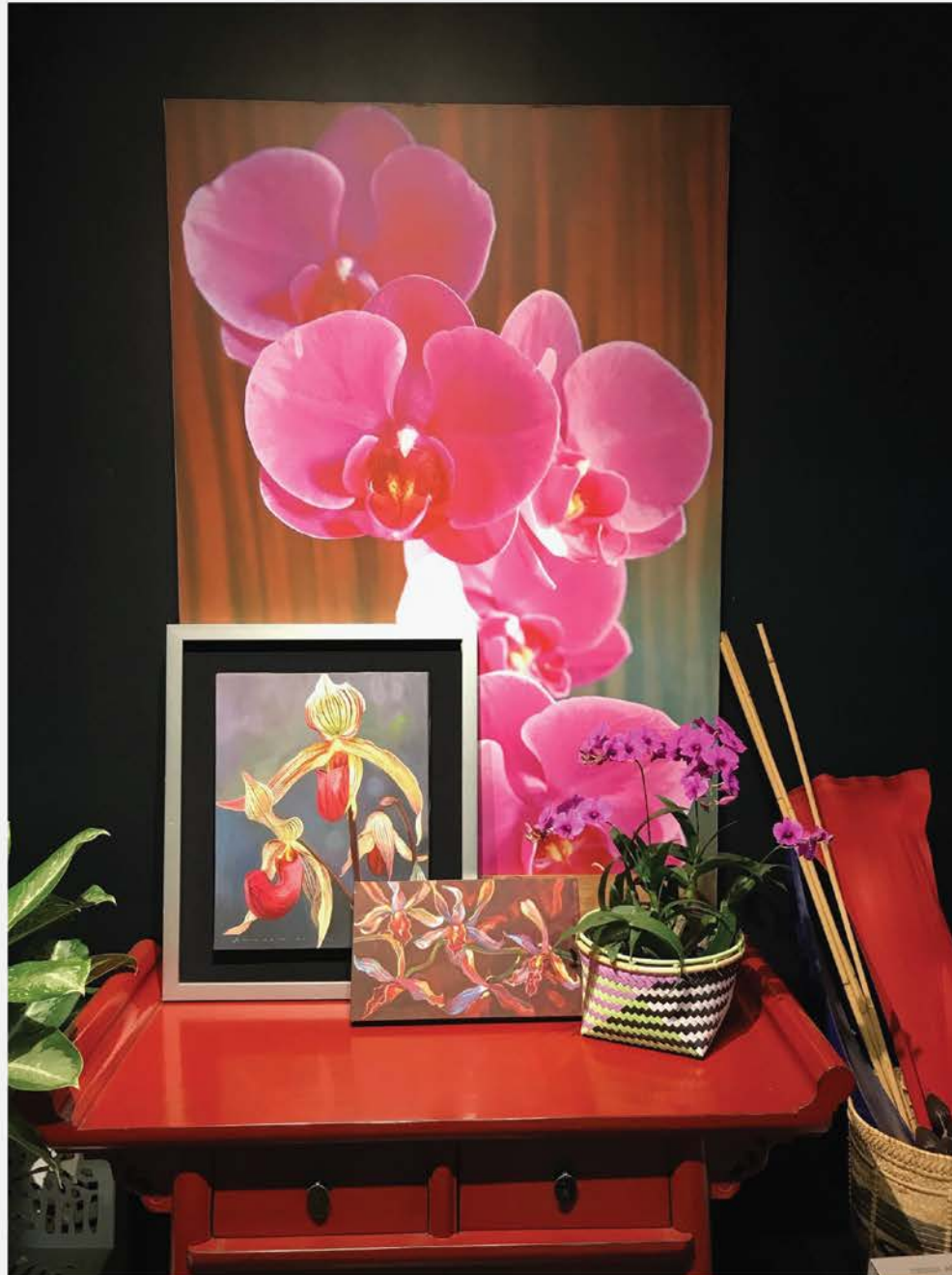


ORMOND HOTEL
DUBLIN



TOROS KAMPALI
SULAWESI - INDONESIA





TROPICAL AREA SDN BHD



www.tropicalarea.com



[Tropical Area](https://www.facebook.com/TropicalArea)



[@tropicalareaarchitects](https://www.instagram.com/tropicalareaarchitects)

tropical
trop

*Hospitality Conception, Architecture Design
Interior Design, Project Management*